



Mysterium Serpentis

— A walk in search of the diamond —



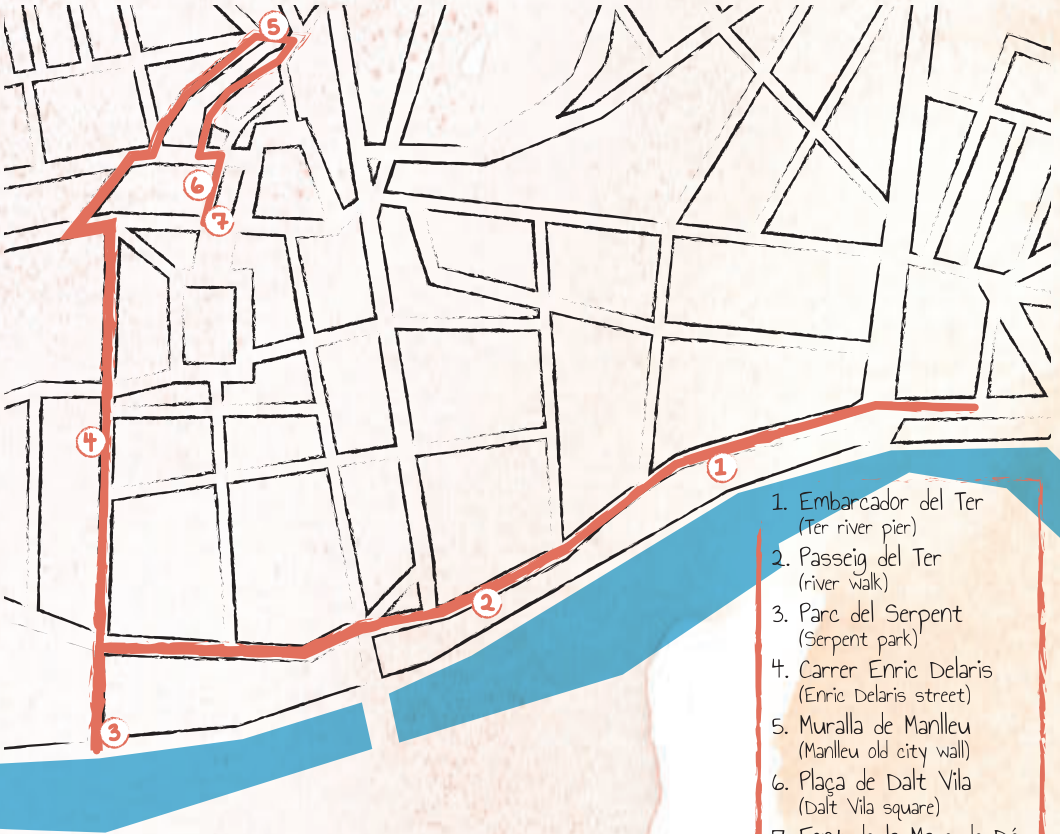
Picture: Sergi Mir, @smfotografies


A family escape tour where you will discover the heritage of Manlleu while solving puzzles about the legend of the Serpent during a journey of about 2km (approx. 1h).

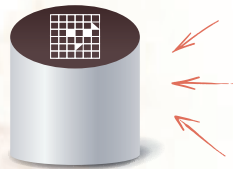
Recommended age: from 4 years.



Here is the itinerary I followed to conduct my research:



- You'll need a pencil, pen or marker to be able to solve some of the puzzles.
- We need a device that allows the reading of QR codes to solve some puzzles.
- At each point marked on the map there is a puzzle to solve that will allow you to discover facts related to the legend of the Serpent of Manlleu.
- At each point, there is also a milestone like the one in the picture.
The drawing must be copied in the booklet, as it gives clues to decipher the final enigma.
- If you would like a printed copy of the booklet format, you can collect it at reception in the Museu del Ter.
- Some clues to some of the puzzles are included at the end of the booklet, and are marked with this symbol: 



To start the itinerary, you must find the first page of this diary. If you haven't seen it yet, you'll find it on the panel next to the Museu del Ter.

There you will find out where you need to start the search for the diamond.

Diamond Search Day 2

On the second day of the diamond search, I am continuing with my research and today I have defined a plan that I think might be of use to you.

Let me tell you: having studied in depth the legend of the Serpent of Manlleu, I have established a route that you can follow to find clues and answers to my questions that will help you discover the location of the diamond.

This route follows the itinerary I have drawn on the map and has seven stops at key points around town. Also, you'll see that I've set up a milestone at some stops. Be very careful and attentive because these milestones will give you some very important clues that I think will help you find the diamond!

Finally, a word of warning! During my research, I felt like I was being followed and every time I had a suspicion, I would see the symbol of a hand like this one.



Do you think it has anything to do with anything? Pay close attention if you see it too.

For my safety and yours, I've been collecting all the findings and answers to the questions I've asked myself in the form of puzzles to make it harder for whoever is following me. I know it won't be a problem for you.

I hope you can help me.

Good Luck!

Day 4 of the diamond hunt: fauna of the river Ter

Legend has it that a squire who watched the Serpent from this same spot thought he would steal the diamond to help his poor family.

From here you can see the area where the Serpent used to hunt.

The Ter river has long been a habitat for many bird species. However, not all birds can be observed at the same time, as many species migrate to take advantage of different seasonal temperatures and move to places with more abundant food sources and better breeding habitats

When can we find the following birds in the Ter river? Select the birds that are here all year round and sort the related syllables to answer the following question:

By what name was the Serpent of Manlleu known?

The Serpent of _____



(DE)

Cuereta torrentera
• Grey wagtail



(PE)

Corb marí gros
• Great black cormorant



(LA)

Blauet
• Kingfisher



(SE)

Corriol petit
• Little ringed plover

Esplugabous
• Western cattle egret

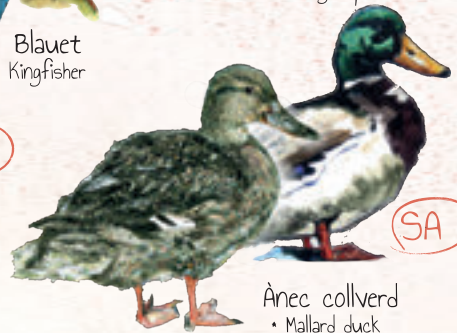


(VE)



(CO)

Martinet de nit
• Black-crowned Night-heron



(SA)

Ànec collverd
• Mallard duck

• The names in catalan have been maintained to ensure the proper functioning of the activity.

Have you found the milestone? Write the code in the grid below, it will help you solve the final puzzle. We're almost there! Check the map for the next stop.

Day 6 of the diamond search: Discovering the city of Manlleu

I leave Passeig del Ter behind and head towards the interior of the city along Carrer Enric Delaris, following the trail of the legend, which explains that the squire hid in his house to protect himself from the fury of the Serpent. If I find the squire's house, maybe I'll be able to find out more about the legend and get closer to the diamond.

This street is full of elements of architectural and cultural interest.

Take a look at the following images to solve the riddle.

The squire's house is the only one whose number is unknown. You'll find the following elements on the fronts of the houses; each one has a street number.

The house with no street number on it is the squire's house.



Where did the squire live?

At number on Carrer Enric Delaris

Check out the map to find out how to get to the next stop of our route!

Day 7 of the diamond search: Medieval Manlleu

After walking through the streets of the city, I arrive at the intersection of Carrer Torelló with Carrer de La Gleva. Here my research takes a 180° turn! I have discovered what happened to the Serpent and why it hasn't been seen since.

The legend tells the following:

The Serpent knocked down the squire's door, but the squire was able to escape. The very angry Serpent chased after him to the city centre. There, when the Serpent wasn't looking, the squire hid the diamond under a large mortar. When the Serpent realised, it curled itself around the mortar, squeezing as hard as it could, and exerted so much effort that it lost all of its strength and died.

A	C	E
G	I	K
M	O	Q

	S	
U	X	W
	Y	

B	D	F
H	J	L
N	P	R

	T	
V	X	X
	Z	

What material was the mortar made of?



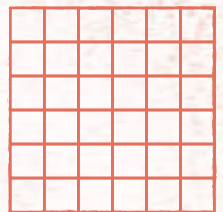
— — — — —

At this point I feel as though someone might be following me again, and see the hand symbol again.

If you look closely, you will find it on the corner of the house in front of the city wall. It looks like it's been here since the time of the Serpent!

Have you found the milestone?
Write the code in the grid below,
it will help you solve the final puzzle.

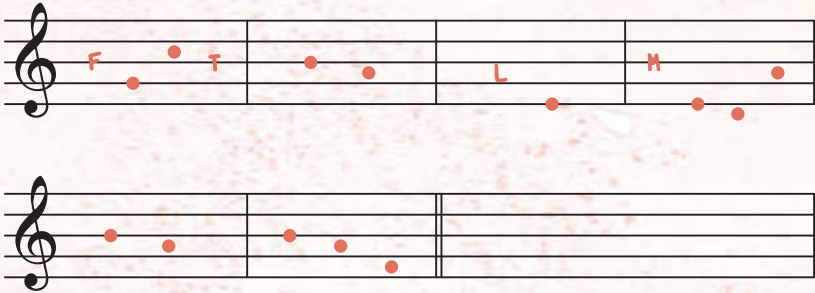
We're so close now!
Look at the map to see where to go to next.



Day 8 of the diamond search: The Serpent's song

What I am researching is known to all the people of Manlleu, there is even a song about the Serpent that recalls the fear that people had. Every year, in the summer, this song is sung in Plaça Dalt Vila.

I found a fragment of the score that hides a clue as to where the diamond is.



DO	RE	MI	FA	SOL	LA	SI
N	R	A	U	O	E	D



Nu → Where did the squire take the diamond
once the Serpent was dead?

Go get it!

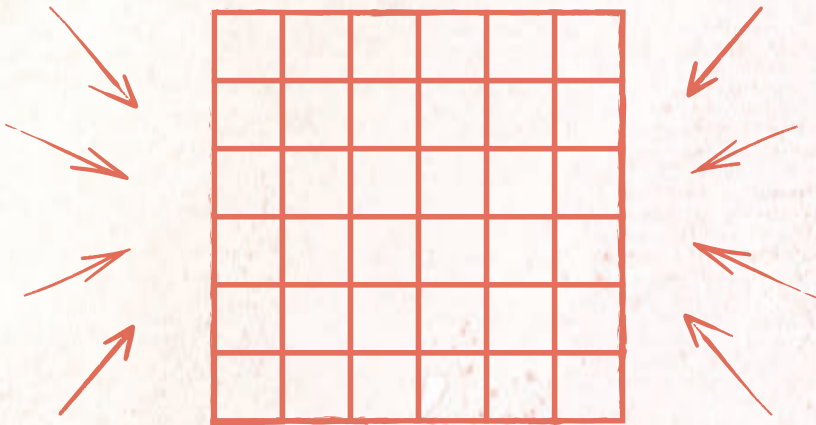
You have the map, but don't hesitate to ask
the people of Manlleu where this place is!



Diamond Search Day 8: I am very close to the diamond

All indications show that the diamond was taken to this place you just discovered, but I don't know where I can find it, it's gone! I need to review my research to find out where it may be. I think I know the exact place to find the answer to all my questions.

- Stand in front of the fountain and take 9 steps forward.
- Take as many steps as the name of the serpent's habitat (without the article "La").
- Go down (street number where the squire lived -2) steps.
- Take 2 steps forward.
- Take 3 steps to the left.
- Go down 12 steps.
- Take as many steps to the left as the Serpent measured in metres.
- Scan the QR code you have found with your mobile phone and enter the drawing which is a result of all of the milestones.



Clues

Here are some clues that can help you solve some of the puzzles.

Page 4

1)



2)



3)



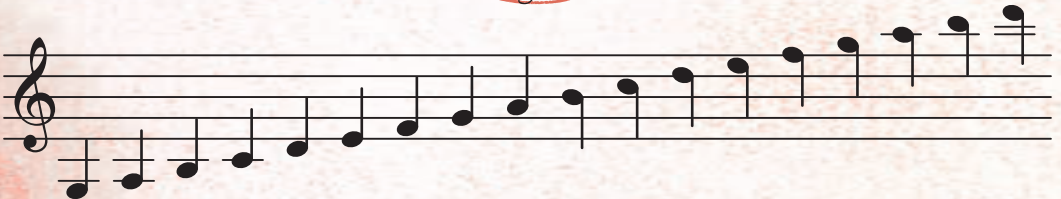
4)



Page 8



Page 9



Sol La Si Do Re Mi Fa Sol La Si Do Re Mi Fa Sol La Si Do



Museu del Ter
MNACTEC



Ajuntament
de Manlleu



Generalitat de Catalunya
Departament de Cultura

